

400 Erie Blvd, West - Syracuse, NY 13204

**AVAILABLE**



**Brang Real Estate, LLC**

7050 Cedar Bay Road  
Fayetteville, NY 13066

[www.brangco.com](http://www.brangco.com)

Phone: (315) 446-7876

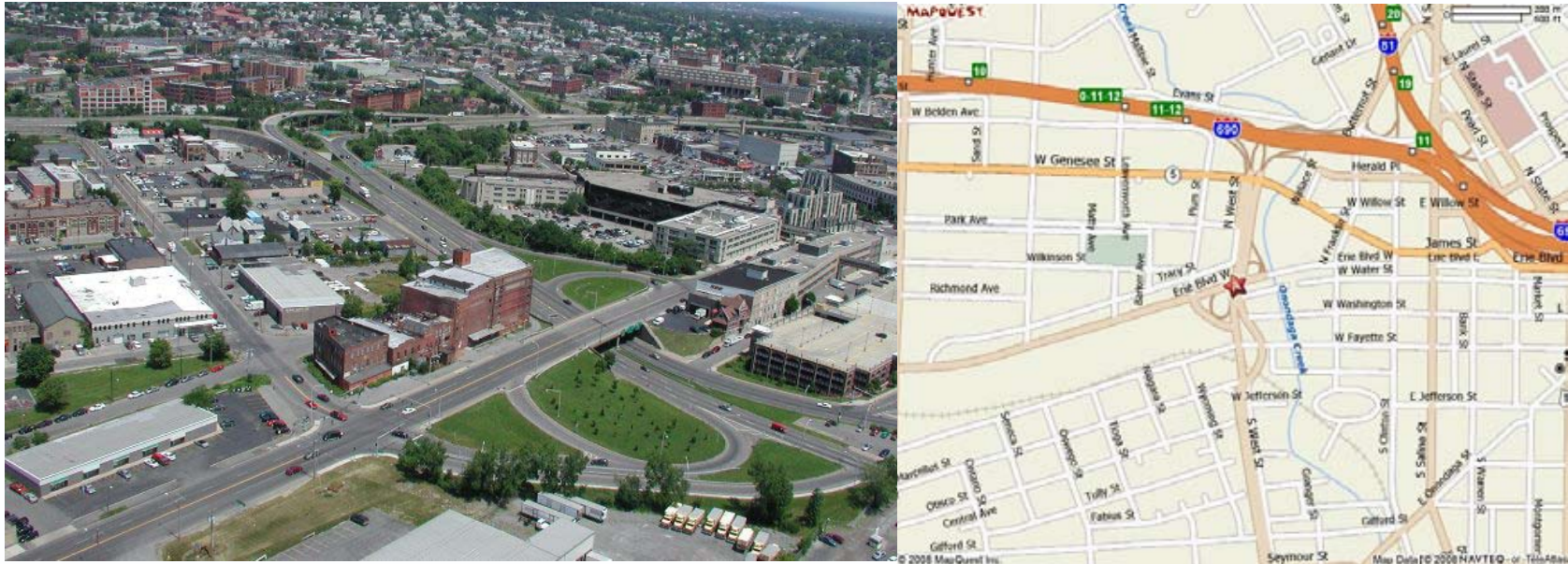
Fax: (315) 446-8197

Email: [jimbrang@gmail.com](mailto:jimbrang@gmail.com)

All information furnished, regarding property for sale, rental or financing is from sources deemed reliable, but no warranty or representation is made as to the accuracy thereof and same is submitted subject to errors, change of price, rental or conditions prior to sale, lease or financing or withdrawal without notice.

400 Erie Blvd., West - Syracuse, NY 13204

AVAILABLE



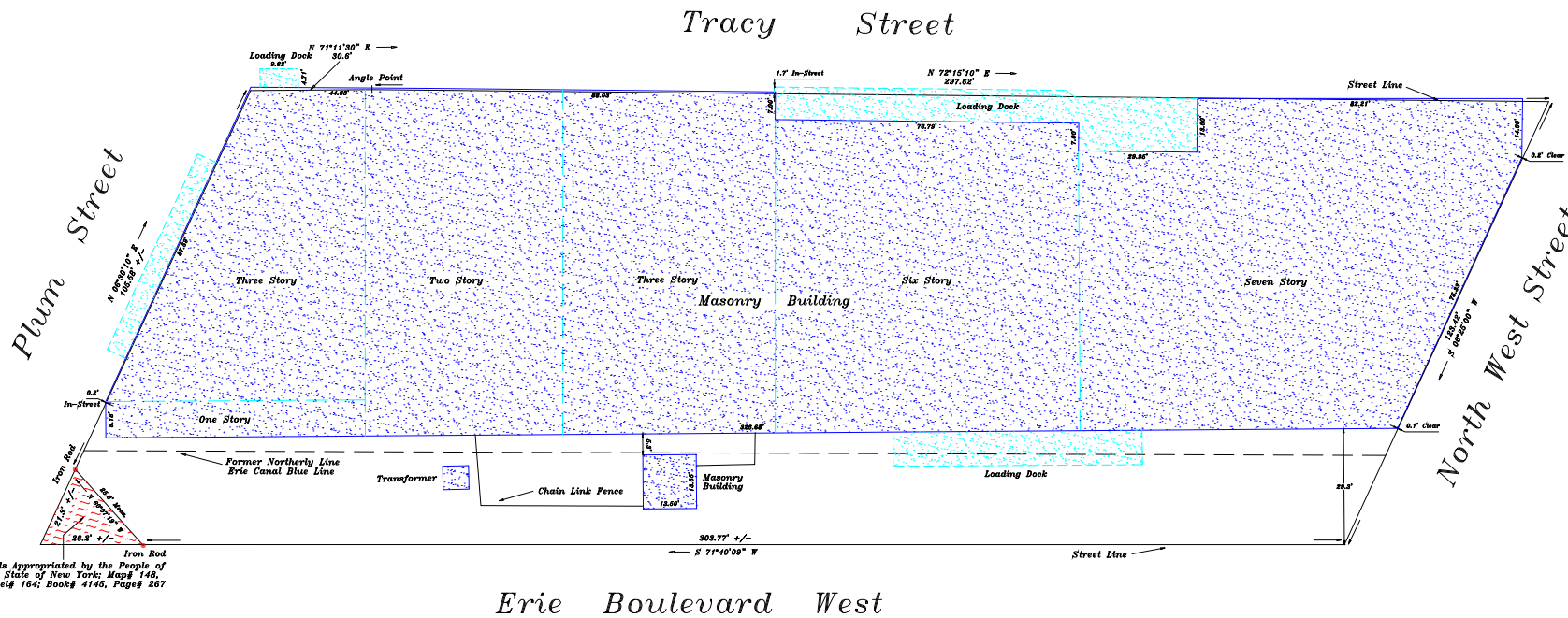
- An existing 140,000+g center
- Approx. 140,000 existing s.f.
- (2) Main buildings total approx 100,000 s.f.
- Zoning Industrial/Business
- Exceptional visibility on prime corner lot located at traffic light intersection
- Located in an Empowerment Zone
- Easily dividable
- Capable of multiple uses.
- Versatile development possibilities.
- Convenient to entire CNY area with easy access to I-481, I-81, I-690, and the NYS Thruway
- Close to downtown businesses and restaurants
- Will Build to suit interior Tenant Improvements.

Brang Real Estate, LLC

7050 Cedar Bay Road  
Fayetteville, NY 13066  
www.brangco.com

Phone: (315) 446-7876  
Fax: (315) 446-8197  
Email: jimbrang@gmail.com

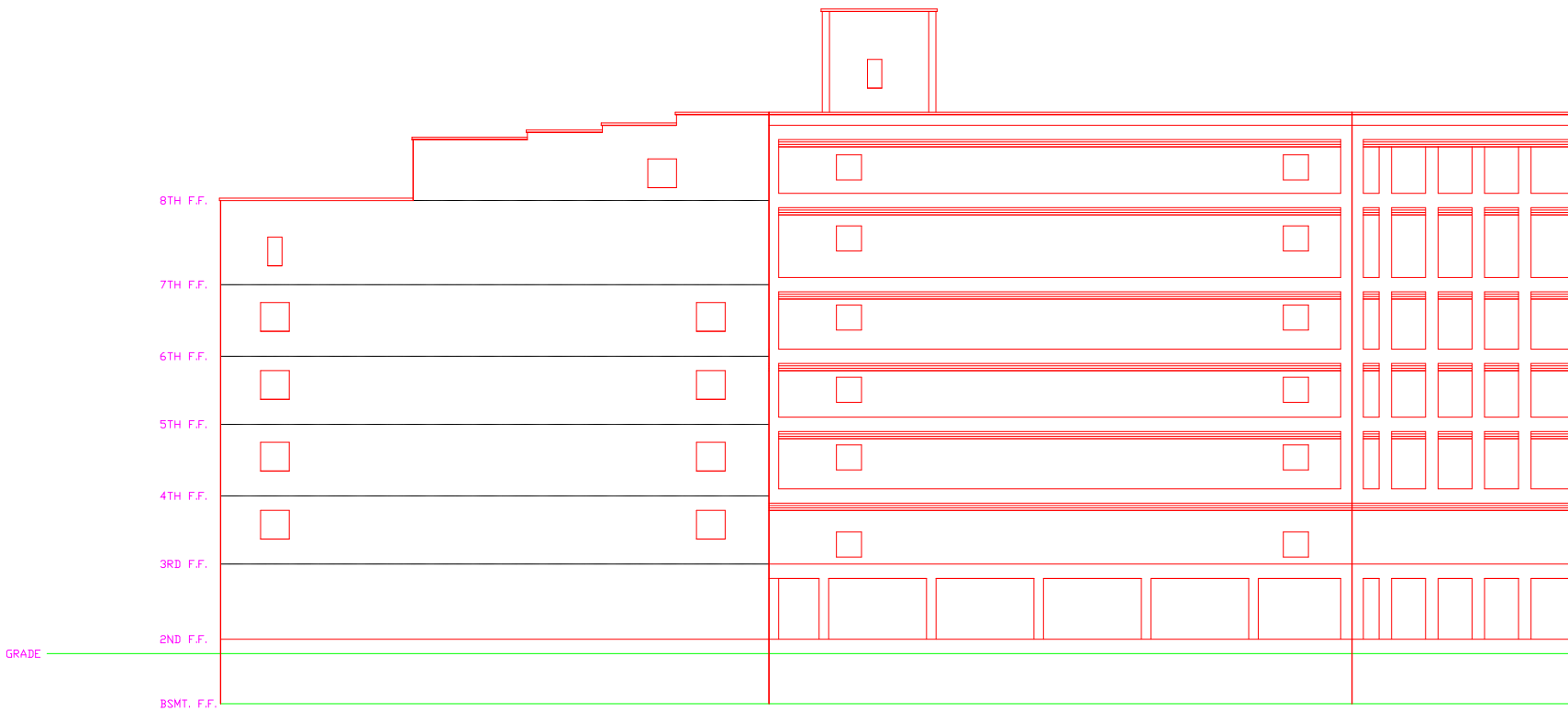
All information furnished, regarding property for sale, rental or financing is from sources deemed reliable, but no warranty or representation is made as to the accuracy thereof and same is submitted subject to errors, change of price, rental or conditions prior to sale, lease or financing or withdrawal without notice.



Lands Appropriated by the People of the State of New York; Map# 146, Parcel# 164; Book# 4146, Page# 267

Erie Boulevard West

<b>R.J. LIGHTON SR.</b>		Location Survey on Part of Block# 74 and Part of Abandoned Erie Canal Lands - Syracuse.
<b>LAND SURVEYING</b>		
886 E. Brighton Ave., Syracuse, New York 13205		Known as No. 400-430 Erie Boulevard West, City of Syracuse, County of Onondaga, State of New York.
I hereby certify that this map was made from an actual survey and same is correct.		
R.J. Lighton Sr.	NYSLS 45379	Drawn by: MJM Scale: 1" = 20' Date: 01-02-07
R.J. Lighton Jr.	NYSLS 50554	
J.R. Lighton	NYSLS 50806	Revisions:



SOUTH ELEVATION

SCALE: 1/8" = 1'-0"

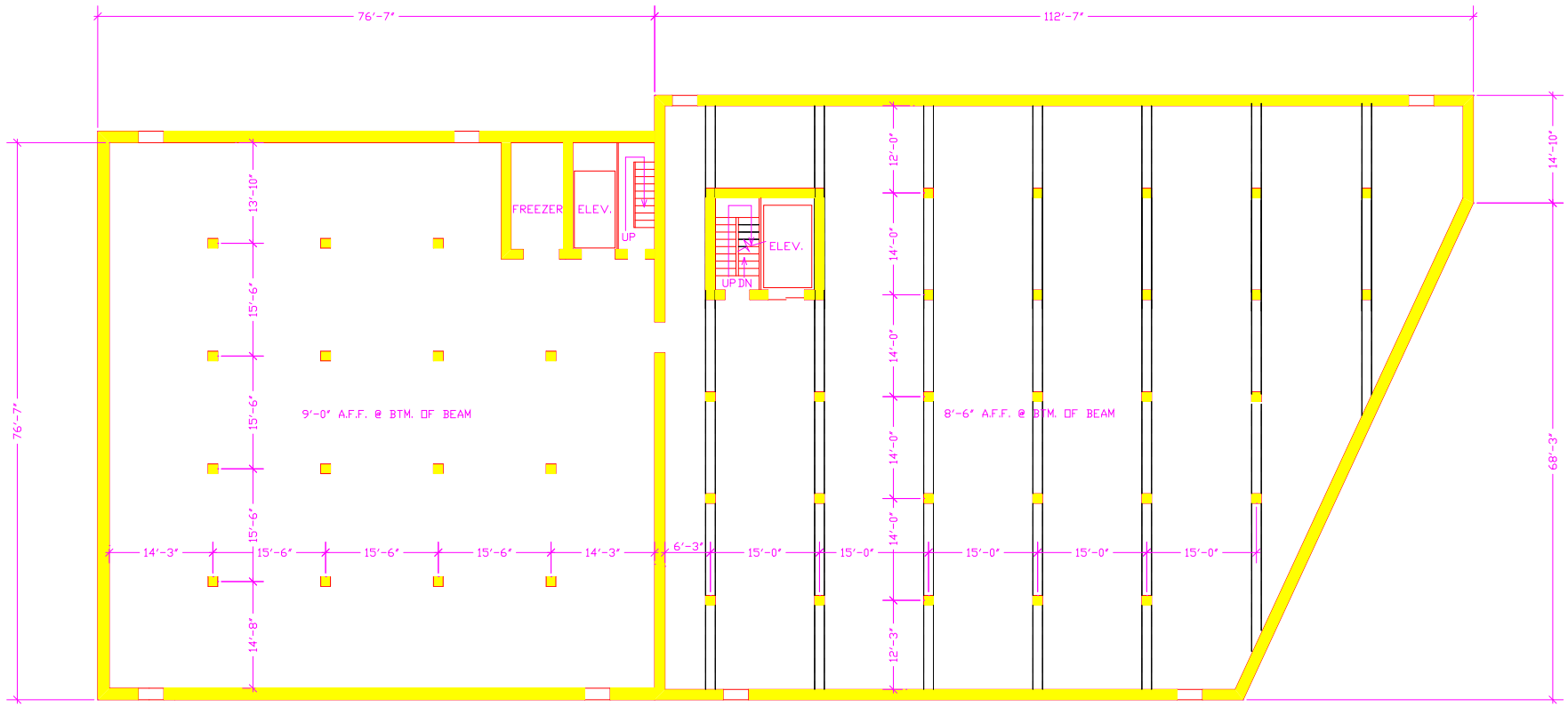
NOT FOR CONSTRUCTION  
 ALL DIMENSIONS ARE APPROXIMATE  
 AND ARE SUBJECT TO FIELD VERIFICATION



SYRACUSE COLD STORAGE BLDG.  
 400-430 ERIE BLVD. WEST, SYRACUSE, NEW YORK

DATE: 1/4/06  
 SCALE: 1/8" = 1'-0"  
 REVISIONS: 1/5/04  
 REVISIONS: 1/19/04

SHEET:  
 A-0  
 ELEVATION



SECOND FLOOR PLAN  
SCALE: 1/8" = 1'-0"

STREET LINE  
ERIE BLVD, WEST

NOT FOR CONSTRUCTION  
ALL DIMENSIONS ARE APPROXIMATE  
AND ARE SUBJECT TO FIELD VERIFICATION



SYRACUSE COLD STORAGE BLDG. 400-430 ERIE BLVD. WEST, SYRACUSE, NEW YORK		SHEET:
DATE	1/4/06	A-2
SCALE:	1/8" = 1'-0"	3RD. FLR PLAN
REVISIONS:	1/5/04	
REVISIONS:	1/19/04	